



**FENOJA**<sup>®</sup>  
ITALIAN GEARBOX & GEARLESS MACHINE

**New Generation  
Permanent Magnet  
Synchronous Gearless  
Traction m/c.**



**FIL-250L**  
Gearless Machine



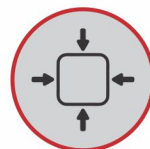
**No Machine Room  
Require**



**Save Energy**



**Low Noise**



**Compact Designs**



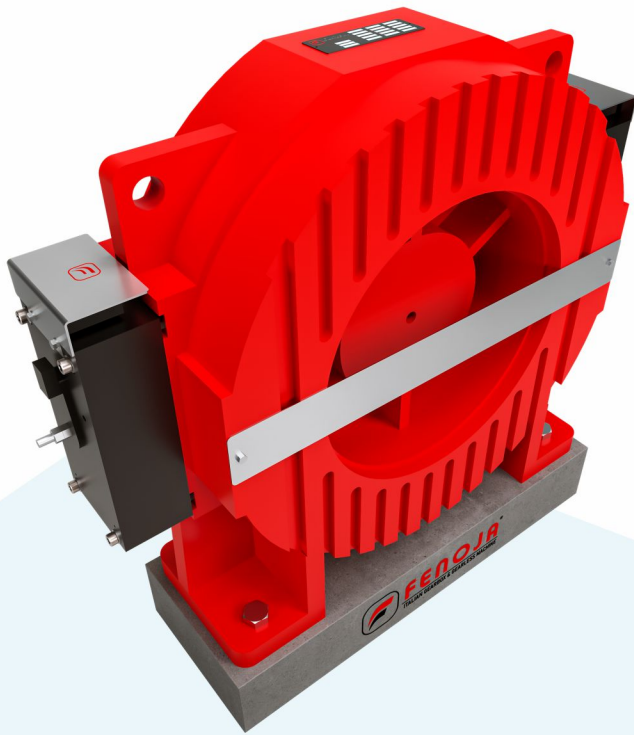
**Technology  
Collaboration by Italy**

[www.fenoja.com](http://www.fenoja.com)



# FIL-250L

## Gearless Machine



MAX. STATIC LOAD	4000KG
ROPING	2;1
VOLTAGE	380 V
WRAP	SINGLE
ELV. LOAD	(630-1150)KG
ELV. SPEED	(0.5-2.5)M\S
SHEAVE DIAM	400MM\450MM
DUTY	S5-40%ED
WEIGHT	350 KG
BRAKE	DC110V 2x1 . 3A
IP CODE	Ip41
INS . CIASS	F

## Fenoja FIL250L the perfect gearless for 4000 kg load

Fenoja FIL250L Gearless Motor is the most trusted and advanced lift system in the indigenous market.

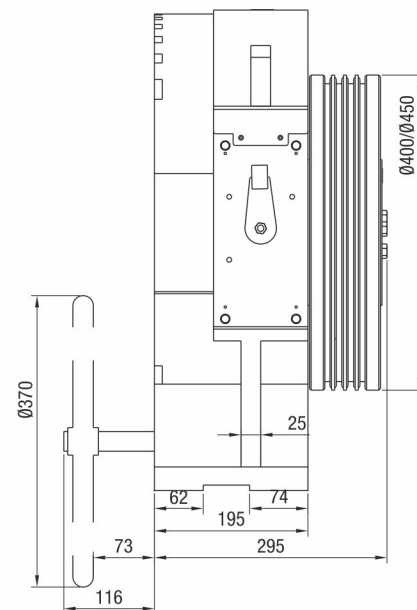
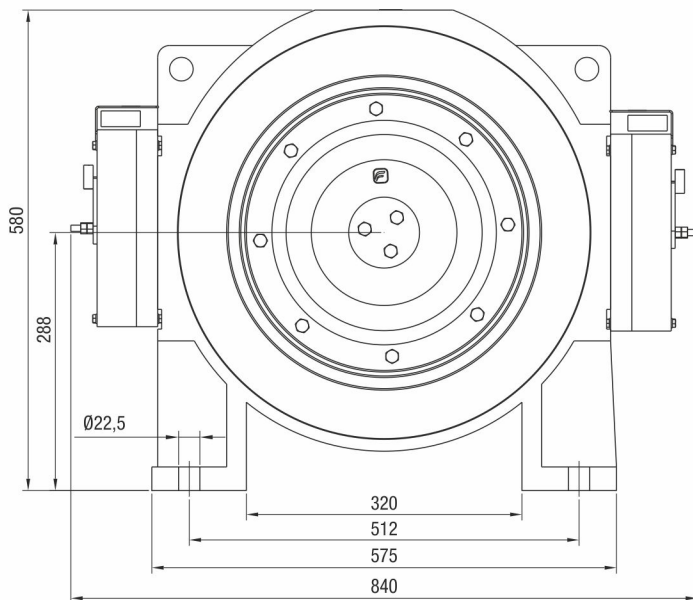
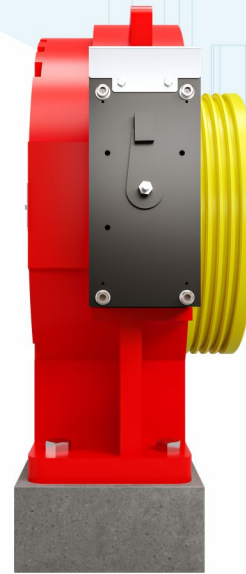
When maximizing the needs of installation cost minimization with safety ride & comfort.



www.fenoja.com

# FIL-250L

Gearless Machine



(ALL DIMENSIONS ARE IN MM) •  
SUBJECT TO CHANGE WITHOUT ANY PRIOR NOTICE! •

www.fenoja.com



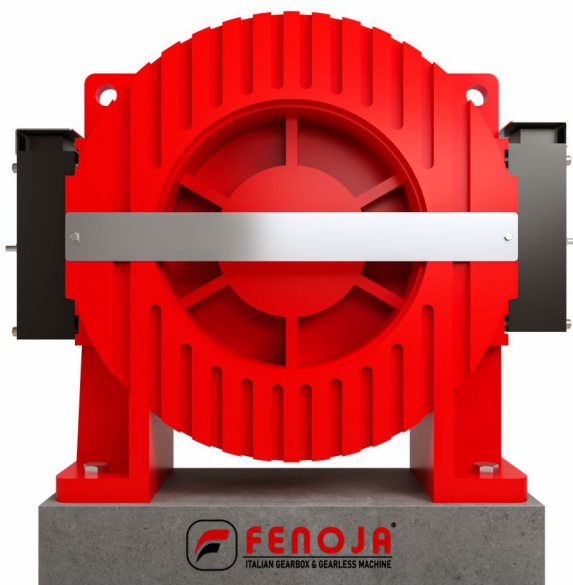
# FIL-250L

## Gearless Machine


TYPE	SPEC	ELV LOAD	ELV SPEED	SHEAVE DIAM	SHEAVE GROOVE	CURRENT	POWER	SPEED	FREQ	TORQUE	POLES	L	L1
		KG	M/S	MM		A	K.W	R/MIN	Hz	NM		MM	MM
FIL250L	680-1, 0A	680	1,0	400	4xØ10x15	11	4,6	95	25	460	32	288	69,5
FIL250L	680-1, 5A	680	1,5	400	4xØ10x15	17	6,9	143	38	460	32	288	69,5
FIL250L	680-1, 75A	680	1,75	400	4xØ10x15	17	8,0	167	45	460	32	288	69,5
FIL250L	680-2, 0A	680	2,0	400	4xØ10x15	21	9,2	191	51	460	32	288	69,5
FIL250L	680-2, 5A	680	2,5	400	5xØ10x15	24	11,5	239	64	460	32	288	69,5
FIL250L	884-1, 0A	884	1,0	400	5xØ10x15	14	5,9	95	25	590	32	288	69,5
FIL250L	884-1, 5A	884	1,5	400	5xØ10x15	23	8,8	143	38	590	32	288	69,5
FIL250L	884-1, 75A	884	1,75	400	5xØ10x15	23	10,8	167	45	590	32	288	69,5
FIL250L	884-2, 0A	884	2,0	400	5xØ10x15	26	11,8	191	51	590	32	288	69,5
FIL250L	884-2, 5A	884	2,5	400	6xØ10x15	31	14,8	239	64	590	32	300	75,5
FIL250L	1088-1, 0A	1088	1,0	400	5xØ10x15	17	7,4	95	25	740	32	288	69,5
FIL250L	1088-1, 5A	1088	1,5	400	5xØ10x15	28	11,1	143	38	740	32	288	69,5
FIL250L	1088-1, 75A	1088	1,75	400	5xØ10x15	28	12,9	167	45	740	32	288	69,5
FIL250L	1088-2, 0A	1088	2,0	400	5xØ10x15	31	14,8	191	51	740	32	288	69,5
FIL250L	1088-2, 5A	1088	2,5	400	6xØ10x15	38	18,5	239	64	740	32	300	75,5


[www.fenoja.com](http://www.fenoja.com)

**New Generation  
Permanent Magnet  
Synchronous Gearless  
Traction m/c.**



**India Factory Warehouse :**

 Malayapur, Raghunathpur,  
24 PGS North, **Baduria** - 743401  
West Bengal, India

 +91-9735-02-0007  
03217-235003

 [info@fenoja.com](mailto:info@fenoja.com)

 [www.fenoja.com](http://www.fenoja.com)