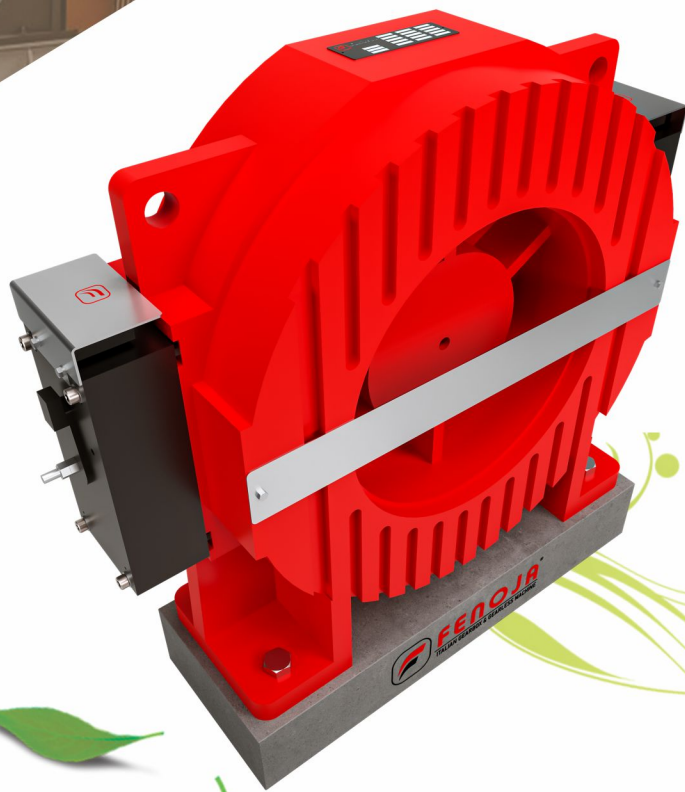




FENOJA[®]
ITALIAN GEARBOX & GEARLESS MACHINE

**New Generation
Permanent Magnet
Synchronous Gearless
Traction m/c.**



FIL-250M
Gearless Machine



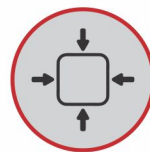
**No Machine Room
Require**



Save Energy



Low Noise



Compact Designs



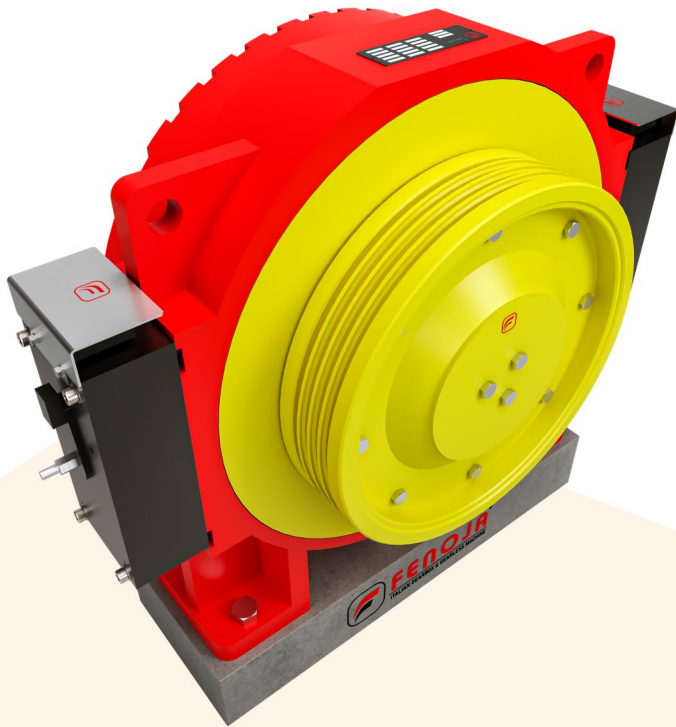
**Technology
Collaboration by Italy**

www.fenoja.com



FIL-250M

Gearless Machine



MAX. STATIC LOAD	4000KG
ROPING	2;1
VOLTAGE	380 V
WEIGHT	330 KG
BRAKE	DC110V 2x1.4A
IP CODE	IP41
INS . CIASS	F

Fenoja FIL250M the perfect gearless for 4000 kg load

Fenoja FIL250M Gearless Motor is the most trusted and advanced lift system in the indigenous market.

When maximizing the needs of installation cost minimization with safety ride & comfort.



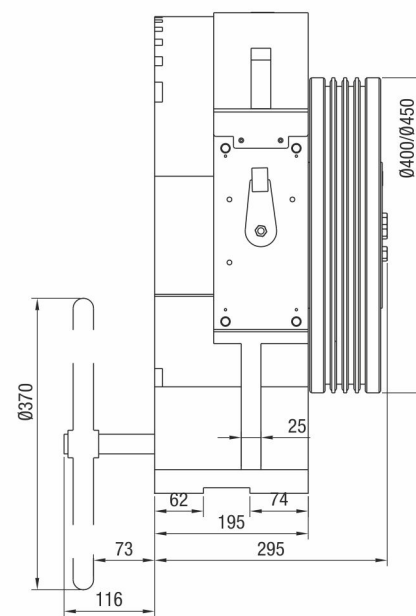
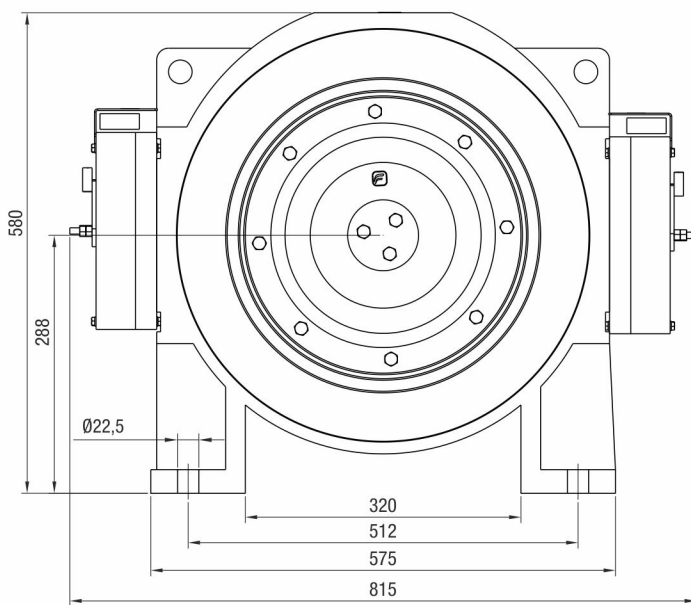
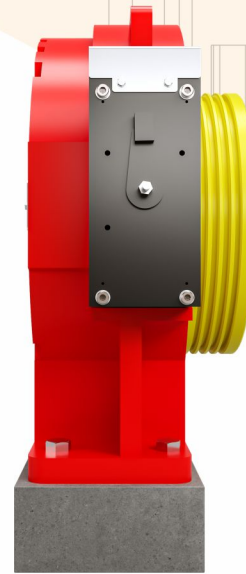
www.fenoja.com

FIL-250M

Gearless Machine



FENOJA[®]
ITALIAN GEARBOX & GEARLESS MACHINE



(ALL DIMENSIONS ARE IN MM) •
SUBJECT TO CHANGE WITHOUT ANY PRIOR NOTICE! •



FENOJA[®]
ITALIAN GEARBOX & GEARLESS MACHINE

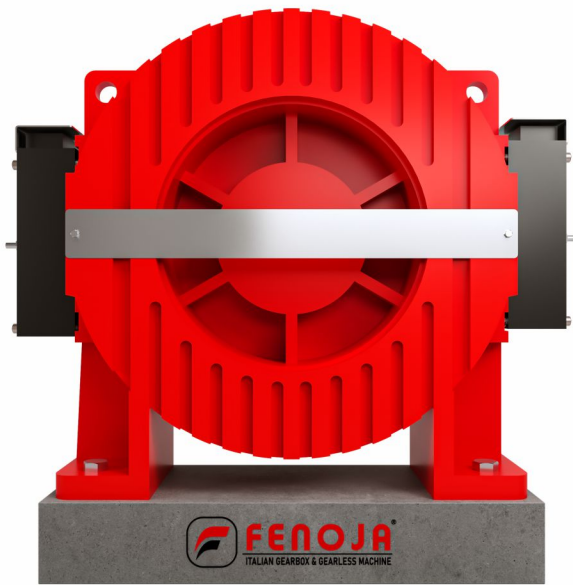
FIL-250M

Gearless Machine

TYPE	SPEC	ELV LOAD	ELV SPEED	SHEAVE DIAM	SHEAVE GROOVE	CURRENT	POWER	SPEED	FREQ	TORQUE	POLES	L	L1
		KG	M/S	MM		A	K.W	R/MIN	Hz	NM		MM	MM
FIL250M	680-1, 0A	680	1,0	400	4xØ10x15	11	4,6	95	25,3	460	32	288	69,5
FIL250M	680-1, 5A	680	1,5	400	4xØ10x15	17	6,9	143	38,1	460	32	288	69,5
FIL250M	680-1, 75A	680	1,75	400	4xØ10x15	17	8,0	167	44,5	460	32	288	69,5
FIL250M	680-2, 0A	680	2,0	400	4xØ10x15	21	9,2	191	50,9	460	32	288	69,5
FIL250M	680-2, 5A	680	2,5	400	5xØ10x15	24	11,5	239	63,7	460	32	288	69,5
FIL250M	884-1, 0A	884	1,0	400	5xØ10x15	14	5,9	95	25,3	590	32	288	69,5
FIL250M	884-1, 5A	884	1,5	400	5xØ10x15	23	8,8	143	38,1	590	32	288	69,5
FIL250M	884-1, 75A	884	1,75	400	5xØ10x15	23	10,8	167	44,5	590	32	288	69,5
FIL250M	884-2, 0A	884	2,0	400	5xØ10x15	26	11,8	191	50,9	590	32	288	69,5
FIL250M	884-2, 5A	884	2,5	400	6xØ10x15	31	14,8	239	63,7	590	32	300	75,5
FIL250M	1088-1, 0A	1088	1,0	400	5xØ10x15	17	7,4	95	25,3	740	32	288	69,5
FIL250M	1088-1, 5A	1088	1,5	400	5xØ10x15	28	11,1	143	38,1	740	32	288	69,5
FIL250M	1088-1, 75A	1088	1,75	400	5xØ10x15	28	12,9	167	44,5	740	32	288	69,5
FIL250M	1088-2, 0A	1088	2,0	400	5xØ10x15	31	14,8	191	50,9	740	32	288	69,5
FIL250M	1088-2, 5A	1088	2,5	400	6xØ10x15	38	18,5	239	63,7	740	32	300	75,5

www.fenoja.com

**New Generation
Permanent Magnet
Synchronous Gearless
Traction m/c.**



India Factory Warehouse :

📍 Malayapur, Raghunathpur,
24 PGS North, **Baduria** - 743401
West Bengal, India

☎ +91-9735-02-0007
03217-235003

✉ info@fenoja.com

🌐 www.fenoja.com