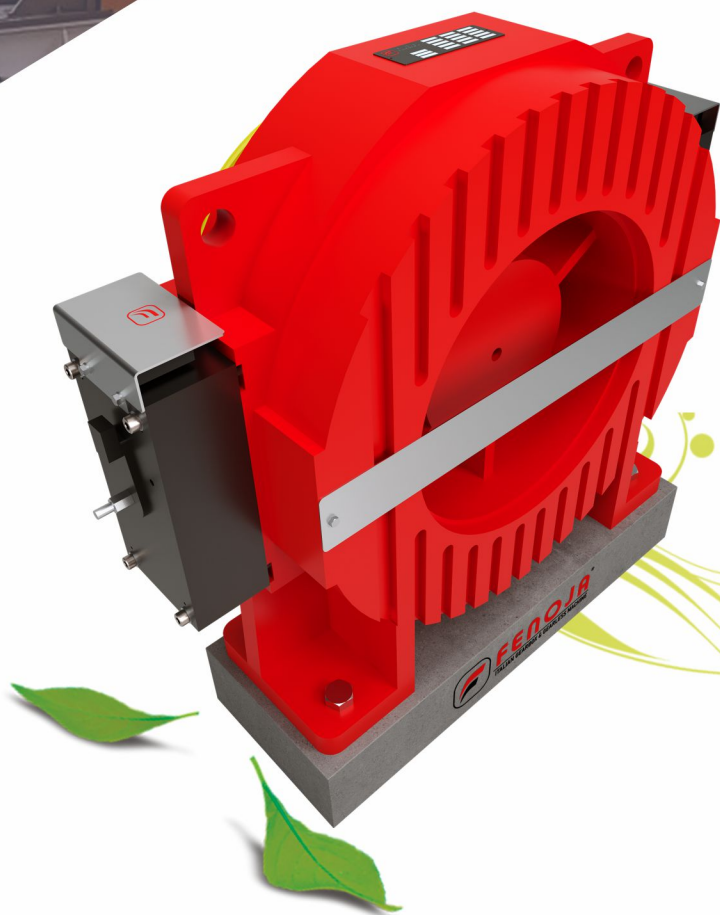




FENOJA[®]
ITALIAN GEARBOX & GEARLESS MACHINE

**New Generation
Permanent Magnet
Synchronous Gearless
Traction m/c.**



FIL-550
Gearless Machine



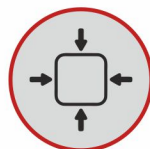
**No Machine Room
Require**



Save Energy



Low Noise



Compact Designs



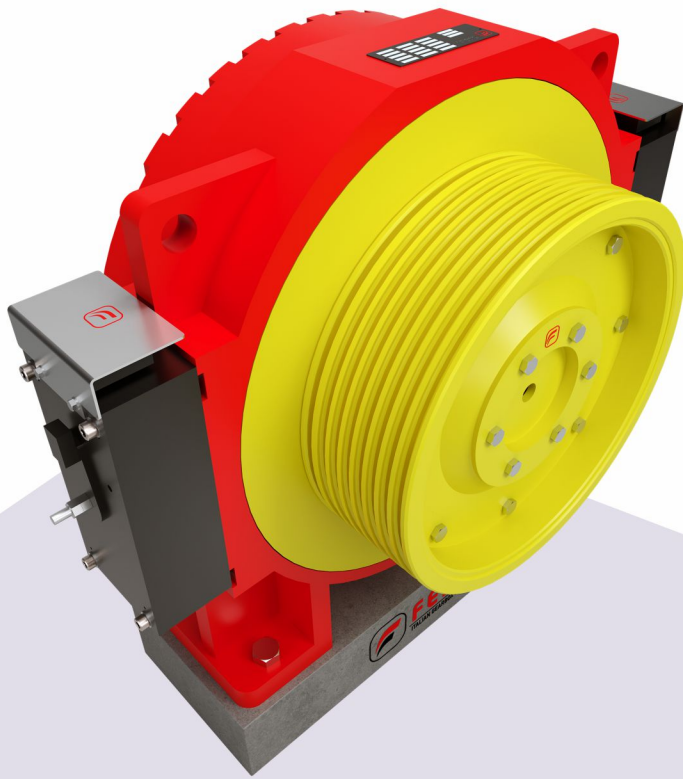
**Technology
Collaboration by Italy**

www.fenoja.com



FIL-550

Gearless Machine



VOLTAGE	380 V
ROPING	2;1
EIV. LOAD	1600-2000KG
ELV. SPEED	0.5-2.5M\S
SHEAVE DIAM	480
STARTS PET HOUR	240 ST\H
MAX. STATIC LOAD	10000 KG
WEIGHT	000KG

Fenoja FIL550 the perfect gearless for 1250 kg load

Fenoja FIL550 Gearless Motor is the most trusted and advanced lift system in the indigenous market.

When maximizing the needs of installation cost minimization with safety ride & comfort.



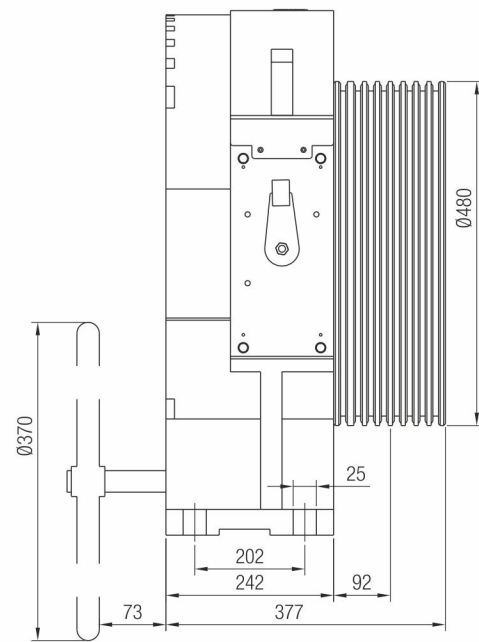
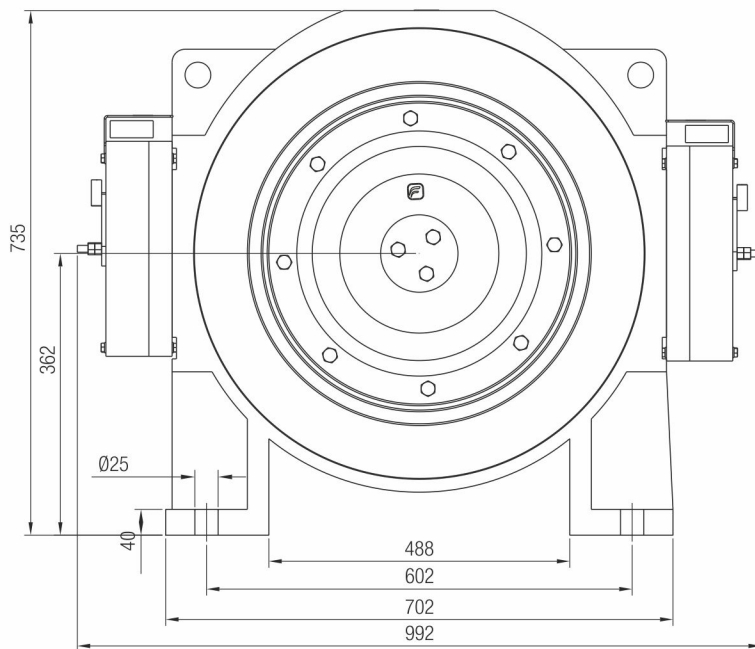
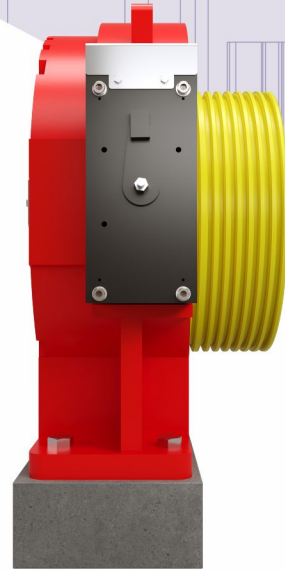
www.fenoja.com

FIL-550

Gearless Machine



FENOJA[®]
ITALIAN GEARBOX & GEARLESS MACHINE



(ALL DIMENSIONS ARE IN MM) •
SUBJECT TO CHANGE WITHOUT ANY PRIOR NOTICE! •

www.fenoja.com



FENOJA
ITALIAN GEARBOX & GEARLESS MACHINE

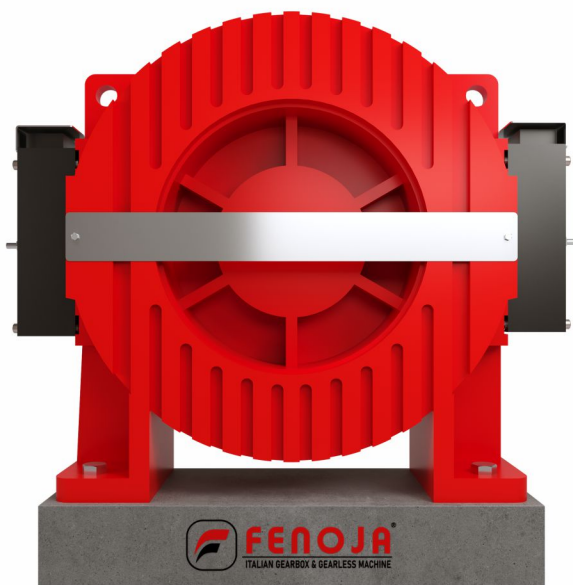
FIL-550

Gearless Machine

TYPE	SPEC	ELV LOAD	ELV SPEED	SHEAVE DIAM	SHEAVE GROOVE	CURRENT	POWER	SPEED	FREQ	TORQUE	POLES	UNDERCUT ANGLE
		KG	M/S	MM		A	K.W	R/MIN	Hz	NM		0
FIL550	1600-0, 5A	1600	0,5	480	6xØ12x17	18	5,6	40	16,0	1330	48	95
FIL550	1600-0, 63A	1600	0,63	480	6xØ12x17	18	7,0	50	20,0	1330	48	
FIL550	1600-1, 0A	1600	1,0	480	6xØ12x17	27	11,1	80	32,0	1330	48	
FIL550	1600-1, 5A	1600	1,5	480	6xØ12x17	44	16,6	119	47,6	1330	48	
FIL550	1600-1, 6A	1600	1,6	480	6xØ12x17	44	17,7	127	50,8	1330	48	
FIL550	1600-1, 75A	1600	1,75	480	6xØ12x17	44	19,4	139	55,6	1330	48	
FIL550	1600-2, 0A	1600	2,0	480	6xØ12x17	49	22,1	159	63,6	1330	48	
FIL550	1600-2, 5A	1600	2,5	480	6xØ12x17	60	27,7	199	79,6	1330	48	
FIL550	2000-0, 5A	2000	0,5	480	7xØ12x17	22	7,0	40	16,0	1660	48	
FIL550	2000-0, 63A	2000	0,63	480	7xØ12x17	22	8,7	50	20,0	1660	48	
FIL550	2000-1, 0A	2000	1,0	480	7xØ12x17	31	13,9	80	32,0	1660	48	
FIL550	2000-1, 5A	2000	1,5	480	7xØ12x17	53	20,7	119	47,6	1660	48	
FIL550	2000-1, 6A	2000	1,6	480	7xØ12x17	53	22,1	127	50,8	1660	48	
FIL550	2000-1, 75A	2000	1,75	480	7xØ12x17	53	24,2	139	55,6	1660	48	
FIL550	2000-2, 0A	2000	2,0	480	7xØ12x17	61	27,6	159	63,6	1660	48	

www.fenoja.com

**New Generation
Permanent Magnet
Synchronous Gearless
Traction m/c.**



India Factory Warehouse :

📍 Malayapur, Raghunathpur,
24 PGS North, **Baduria** - 743401
West Bengal, India

☎ +91-9735-02-0007
03217-235003

✉ info@fenoja.com

🌐 www.fenoja.com