



FENOJA[®]
ITALIAN GEARBOX & GEARLESS MACHINE

**New Generation
Permanent Magnet
Synchronous Gearless
Traction m/c.**



FENO-170C
Gearless Machine



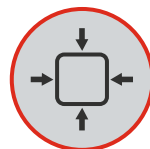
**No Machine Room
Require**



Save Energy



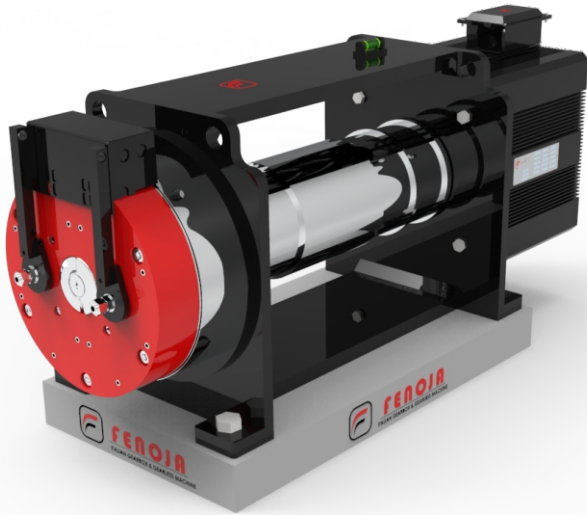
Low Noise



Compact Designs



**Technology
Collaboration by Italy**

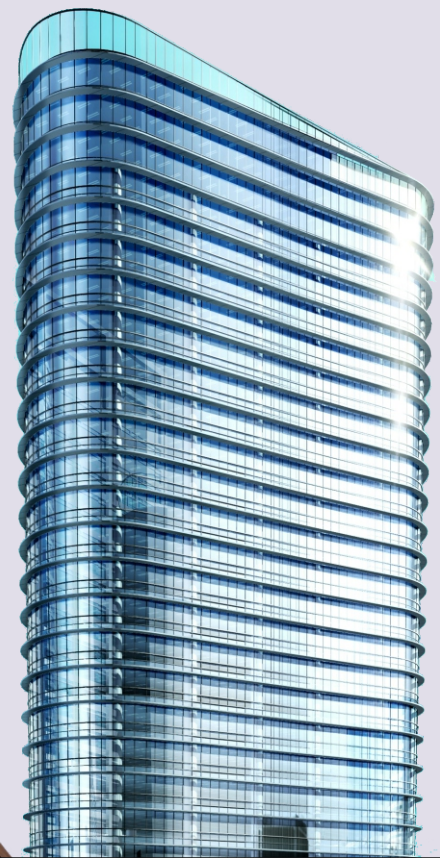


FENO-170C

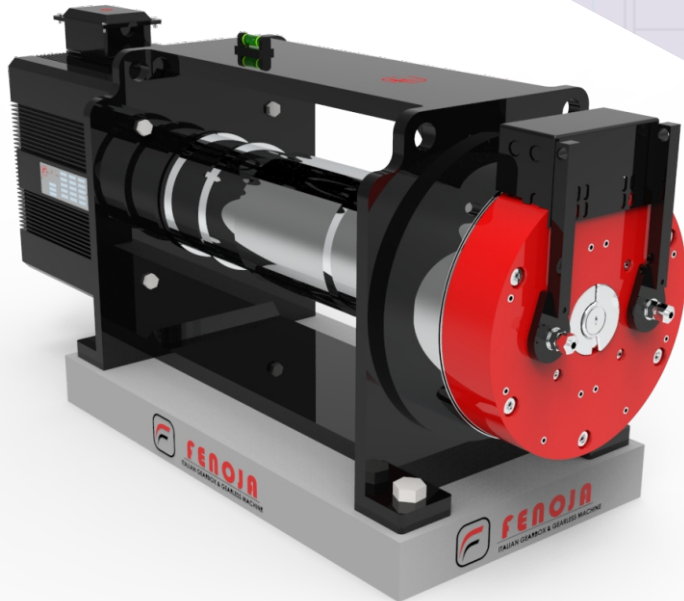
Gearless Machine

Load	1150 ~ 3000 kg	Speed	0.5 ~ 1.75m/s
Roping	2:1	Sheave Dia	120 mm
Voltage	380V	INS.Class	F
IP Code	IP41	Poles	12
Brake Vol	DC110V	Brake Current	1.5A
Working System	S5-40%		

(Spec.)	N Number of slots	W (mm)	H (mm)	L (mm)	L1 (mm)	L2 (mm)
FINO1150/1250/1350	4	60	130	910	500	550
FINO1150/1250/1350	4	65	190	990	540	630
FINO1600/2000	4	60	130	960	550	550
FINO1600/2000	4	65	190	1040	590	630
FINO2500	6	65	190	1175	685	770
FINO3000	6	65	190	1215	725	770



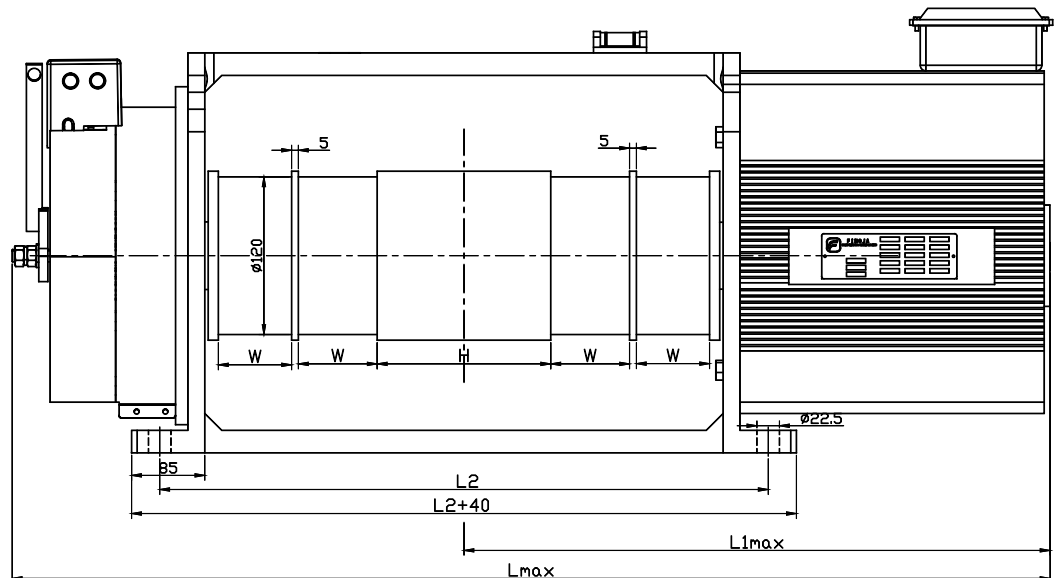
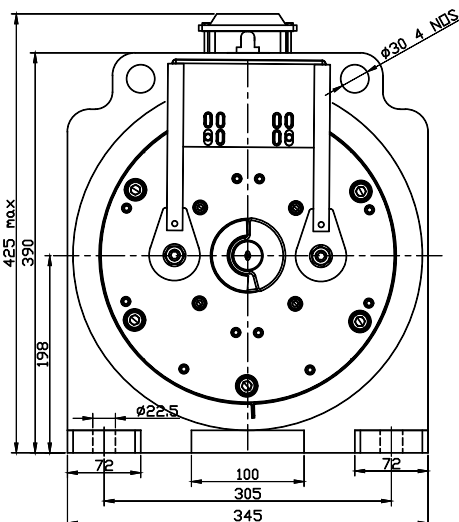
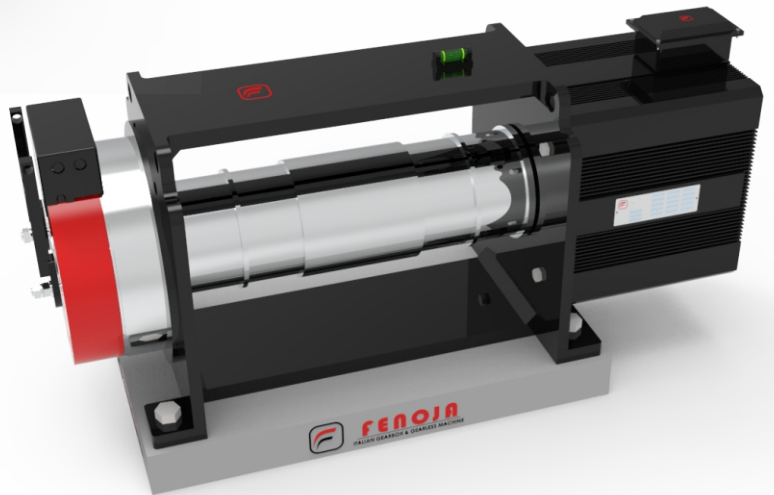
www.fenoja.com

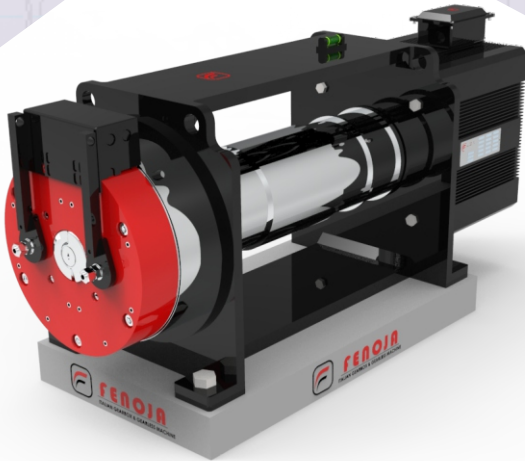


FENO-170C

Gearless Machine

New Generation
Permanent Magnet
Synchronous Gearless
Traction m/c.





FENO-170C

Gearless Machine

FENOJA170C Series Gearless Traction Machine Specification (Roping 2:1)


Type	Load (kg)	speed (m/s)	Power (kw)	Current (A) 380V/220 V	Speed (rpm)	Frequency (Hz)	Torque (N.m)	Sheave (mm)	Brake current (A)	Max.static Load (kg)	Net Weight (kg)
FINO1150	1150	0.5	3.6	7.6	159	15.9	220	120	2X1.79	5000	245
	1150	1.0	7.3	16.1	318	31.8	220	120	2X1.79	5000	245
	1150	1.6	11.7	27.3	509	50.9	220	120	2X1.79	5000	245
	1150	1.75	12.8	27.3	557	55.7	220	120	2X1.79	5000	245
FINO1250	1250	0.5	4	8.3	159	15.9	238	120	2X1.79	5000	245
	1250	1.0	7.9	17.5	318	31.8	238	120	2X1.79	5000	245
	1250	1.6	12.7	29.6	509	50.9	238	120	2X1.79	5000	245
	1250	1.75	13.9	29.6	557	55.7	238	120	2X1.79	5000	245
FINO1350	1350	0.5	4.3	9	159	15.9	260	120	2X1.79	5000	245
	1350	1.0	8.6	18.9	318	31.8	260	120	2X1.79	5000	245
	1350	1.6	13.7	32	509	50.9	260	120	2X1.79	5000	245
	1350	1.75	15	32	557	55.7	260	120	2X1.79	5000	245
FINO1600	1600	0.5	5.1	10.5	159	15.9	305	120	2X1.79	5000	270
	1600	1.0	10.2	22.4	318	31.8	305	120	2X1.79	5000	270
	1600	1.6	16.2	38.5	509	50.9	305	120	2X1.79	5000	270
	1600	1.75	17.8	38.5	557	55.7	305	120	2X1.79	5000	270
FINO2000	2000	0.5	6.3	13.1	159	15.9	380	120	2X1.79	5000	270
	2000	1.0	12.7	28	318	31.8	380	120	2X1.79	5000	270
	2000	1.6	20.3	48	509	50.9	380	120	2X1.79	5000	270
	2000	1.75	22.2	48	557	55.7	380	120	2X1.79	5000	270
FINO2500	2500	0.5	7.9	17	159	15.9	476	120	2X1.26	7000	310
	2500	1.0	15.9	34	318	31.8	476	120	2X1.26	7000	310
	2500	1.6	25.4	58	509	50.9	476	120	2X1.26	7000	310
	2500	1.75	27.8	58	557	55.7	476	120	2X1.26	7000	310
FINO3000	3000	0.5	9.5	20.4	159	15.9	570	120	2X1.26	7000	335
	3000	1.0	19	40	318	31.8	570	120	2X1.26	7000	335
	3000	1.6	30.5	71	509	50.9	570	120	2X1.26	7000	335
	3000	1.75	33.3	71	557	55.7	570	120	2X1.26	7000	335

New Generation Permanent Magnet Synchronous Gearless Traction m/c.



India Factory Warehouse :

 Malayapur, Raghunathpur,
24 PGS North, **Baduria** - 743401
West Bengal, India

 +91-9735-02-0007
03217-235003

 info@fenoja.com

 www.fenoja.com

